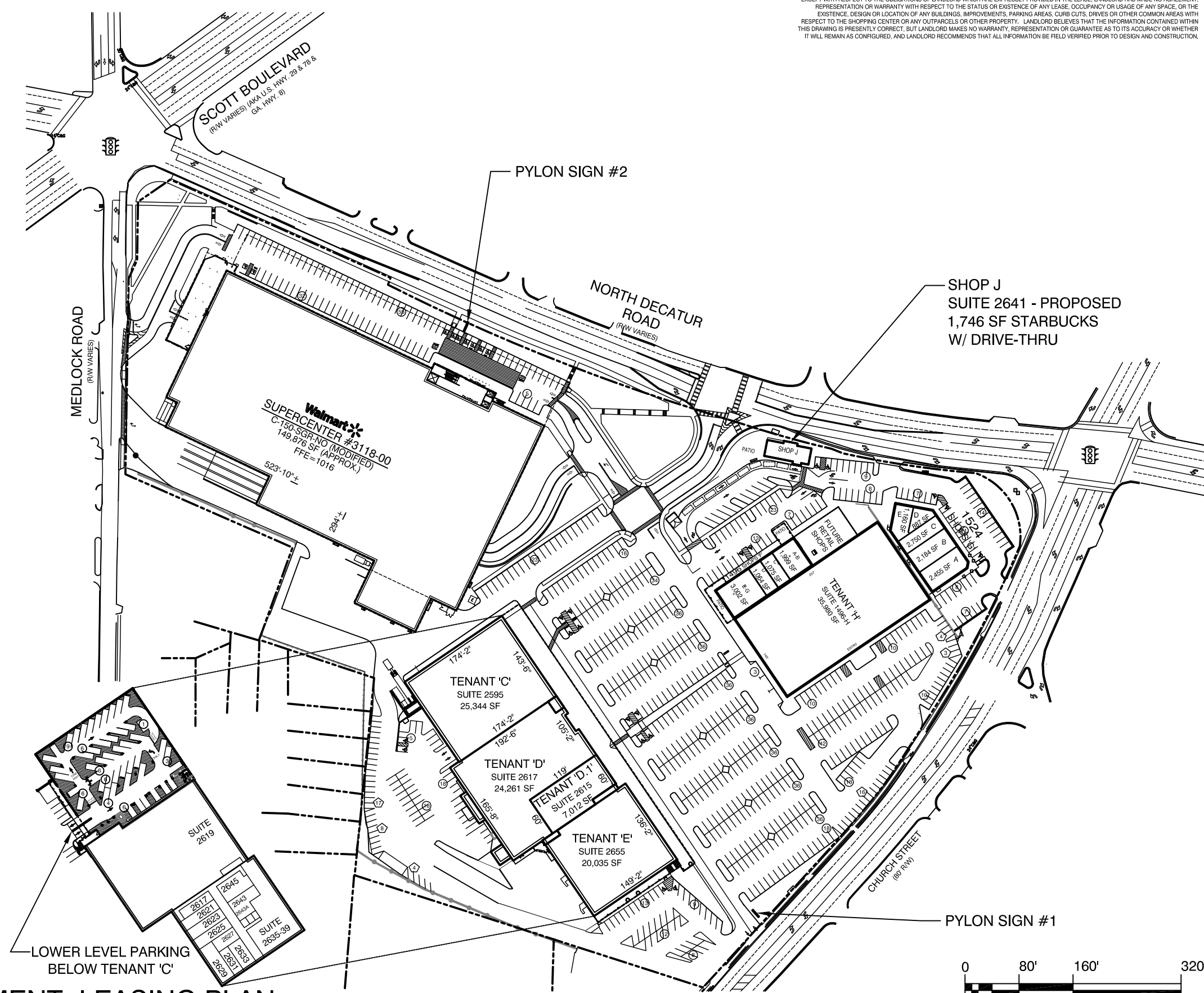
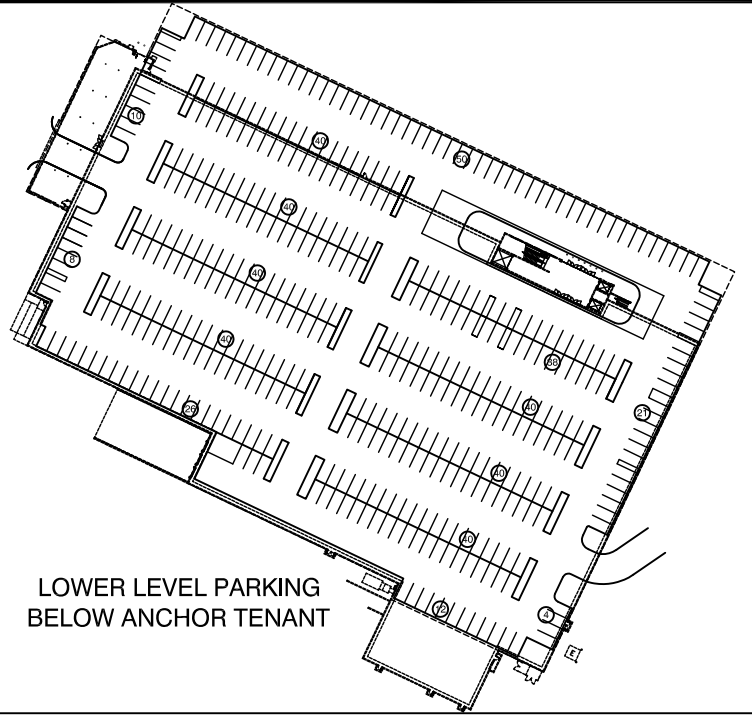
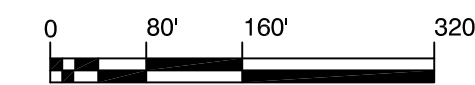


EXCEPT WITH RESPECT TO THE OBLIGATIONS OF LANDLORD WHICH ARE EXPRESSLY PROVIDED IN THE LEASE, LANDLORD HAS MADE NO AGREEMENT, REPRESENTATION OR WARRANTY WITH RESPECT TO THE STATUS OR EXISTENCE OF ANY LEASE, OCCUPANCY OR USAGE OF ANY SPACE, OR THE EXISTENCE, DESIGN OR LOCATION OF ANY BUILDINGS, IMPROVEMENTS, PARKING AREAS, CURB CUTS, DRIVES OR OTHER COMMON AREAS WITH RESPECT TO THE SHOPPING CENTER OR ANY OUTPARCELS OR OTHER PROPERTY. LANDLORD BELIEVES THAT THE INFORMATION CONTAINED WITHIN THIS DRAWING IS PRESENTLY CORRECT, BUT LANDLORD MAKES NO WARRANTY, REPRESENTATION OR GUARANTEE AS TO ITS ACCURACY OR WHETHER IT WILL REMAIN AS CONFIGURED, AND LANDLORD RECOMMENDS THAT ALL INFORMATION BE FIELD VERIFIED PRIOR TO DESIGN AND CONSTRUCTION.



LOWER LEVEL PARKING  
BELOW ANCHOR TENANT

LOWER LEVEL PARKING  
BELOW TENANT 'C'



SCALE: 1" = 160'

# SUBURBAN PLAZA REDEVELOPMENT: LEASING PLAN

NORTH DECATUR ROAD  
DECATUR, DEKALB COUNTY, GA. 30030

DRAWN BY: CO DATE: 08/05/14  
**SELIG** ENTERPRISES, INC.  
1100 SPRING STREET NW SUITE 550  
ATLANTA, GEORGIA 30309-2848  
TEL (404) 876-5511 FAX (404) 875-2629



USER: cneal - Aug 05, 2014 - 11:29am  
S:\CONSTRUCTION\AutoCad\As Built Drawings\Retail\Suburban Plaza\Redevelopment\Options\Suburban Plaza Starbucks option for commissioner2.dwg